

② WEST ELEVATION EXISTING
3/8" = 1'-0"

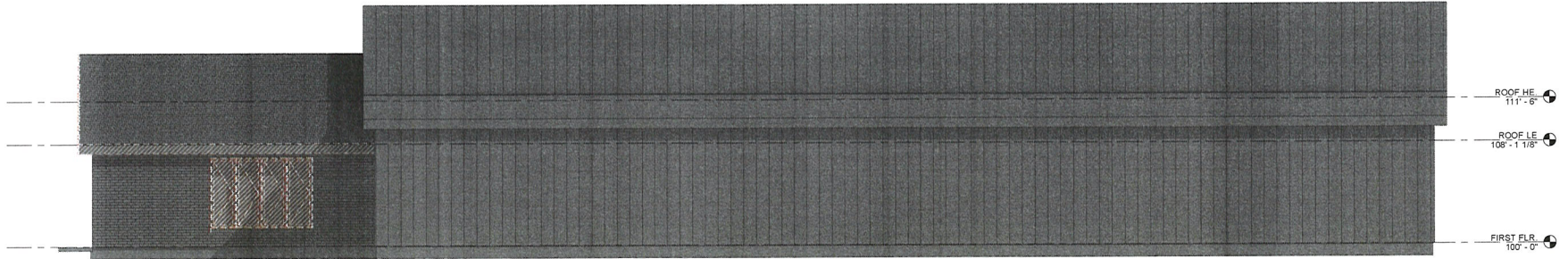


① WEST ELEVATION PROPOSED
3/8" = 1'-0"

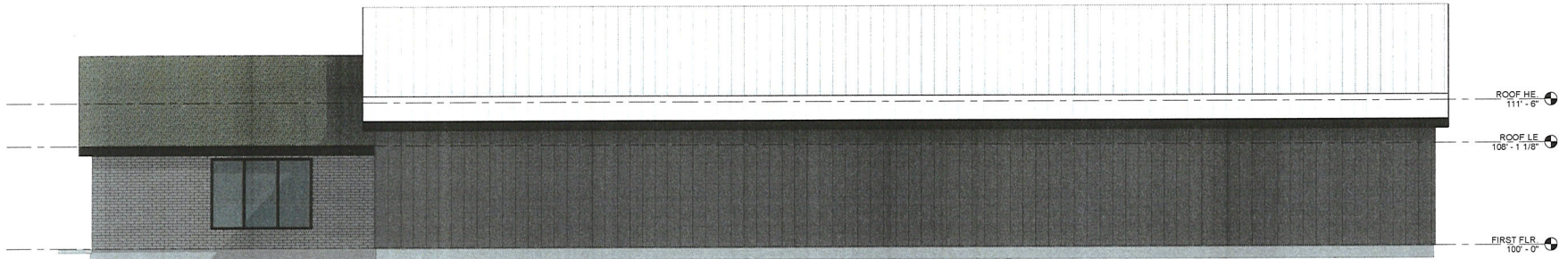
PROJECT:	SHEET NAME:	REVISION:	ADDRESS:	PROJECT NO:	RES	ROUSSEV ENGINEERING SOLUTIONS, LLC	SHEET #
BUILDING ALTERATION III WODBOTTOM	EXTERIOR ELEVATIONS	REVISIONS	801 N PAGE ST, STOUGHTON, WI	0221-14	406 Windy Peak Rd - Verona, WI 53593 608-620-3036 (Office) - sven@rousseveengineering.com		A4.0
		NO. BY DATE					

This document contains confidential and proprietary information of Roussev Engineering Solutions, LLC.
 Before this document is released to the public, it must be approved, signed, and dated by the
 owner or authorized representative of the owner. If this document is released to the public without
 the owner's approval, the owner will not be responsible for any damages or losses.
 BID DOCUMENTS

PLOT DATE: 5/13/21
 PLOT BY: SSR
 PLOT SCALE: 3/8" = 1'-0"



1 SOUTH ELEVATION EXISTING
1/4" = 1'-0"



2 SOUTH ELEVATION PROPOSED
1/4" = 1'-0"

FILE NAME: W:\221-14-ABC-WOODBOTTOM\WOODBOTTOM.dwg


PROJECT:	SHEET NAME:	REVISION:	ADDRESS:	PROJECT NO:	RES	SHEET #
BUILDING ALTERATION III WODBOTTOM	EXTERIOR ELEVATIONS	REVISIONS NO. BY DATE	801 N PAGE ST, STOUGHTON, WI	0221-14	ROUSSEV ENGINEERING SOLUTIONS, LLC 406 Windy Peak Rd - Verona, WI 53593 608-620-3036 (Office) - svet@rousseveengineering.com	A4.1

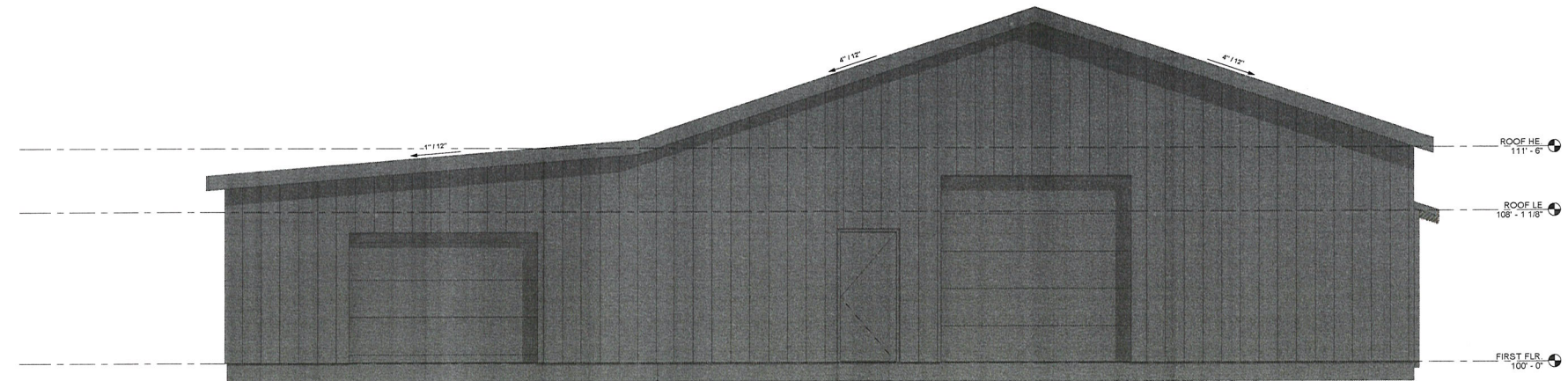
This document contains confidential and proprietary information of Roussev Engineering Solutions LLC.
 Neither this document nor the information herein is to be reproduced, distributed, sold or disclosed
 either in whole or in part without the specific written permission of Roussev Engineering Solutions LLC.
 BID DOCUMENTS

PLOT DATE: 5/13/21
 PLOT BY: SSR
 PLOT SCALE: 1/4" = 1'-0"

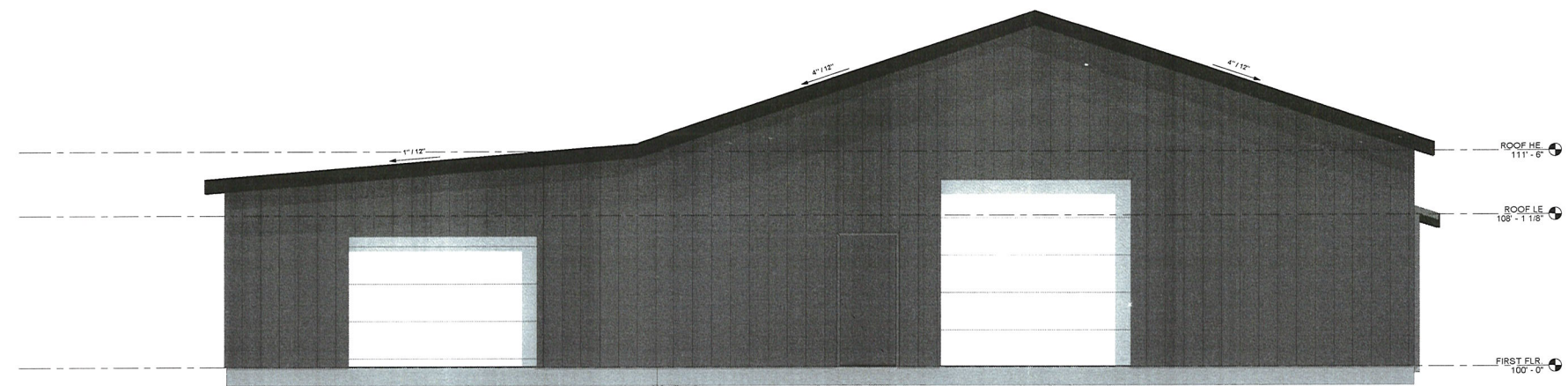


FILE NAME: \\usr2\res\Projects\2021\0221-14 ABC WOOD Bottom\WOODBOTTOM-5.M

PROJECT:	SHEET NAME:	REVISION:	ADDRESS:	PROJECT NO:	 ROUSSEV ENGINEERING SOLUTIONS, LLC	SHEET #
BUILDING ALTERATION III WDOBOTTOM	EXTERIOR ELEVATIONS	<div> <div>REVISIONS</div> <div>NO BY DATE</div> </div>	801 N PAGE ST, STOUGHTON, WI	0221-14	406 Windy Peak Rd - Verona, WI 53593 608-620-3036 (Office) - sve@rousseveengineering.com <small> This document contains confidential or proprietary information of Roussev Engineering Solutions LLC. Neither this document nor the information herein is to be reproduced, distributed, copied or disclosed either in whole or in part unless specifically authorized by Roussev Engineering Solutions LLC. BID DOCUMENTS </small>	A4.2 <div> <div>PLIST DATE:</div> <div>5/13/24</div> </div> <div> <div>PLIST BY:</div> <div>SSR</div> </div> <div> <div>PLIST SCALE:</div> <div>1/8" = 1'</div> </div>



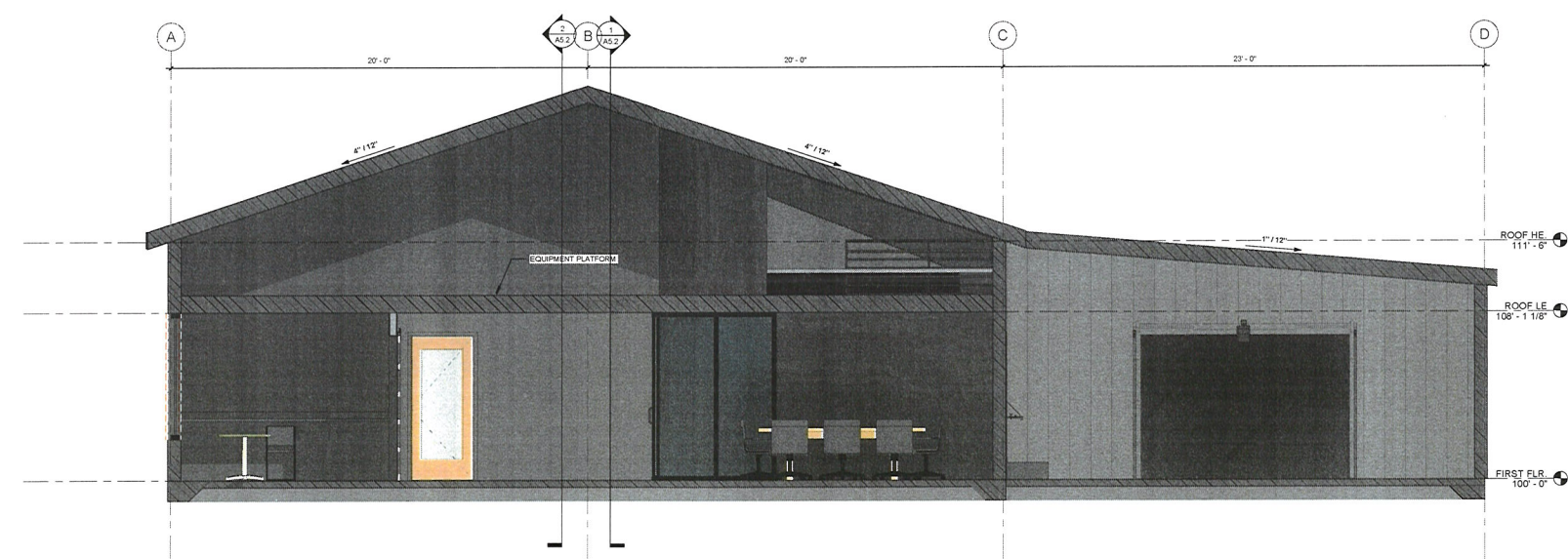
① EAST ELEVATION EXISTING
3/8" = 1'-0"



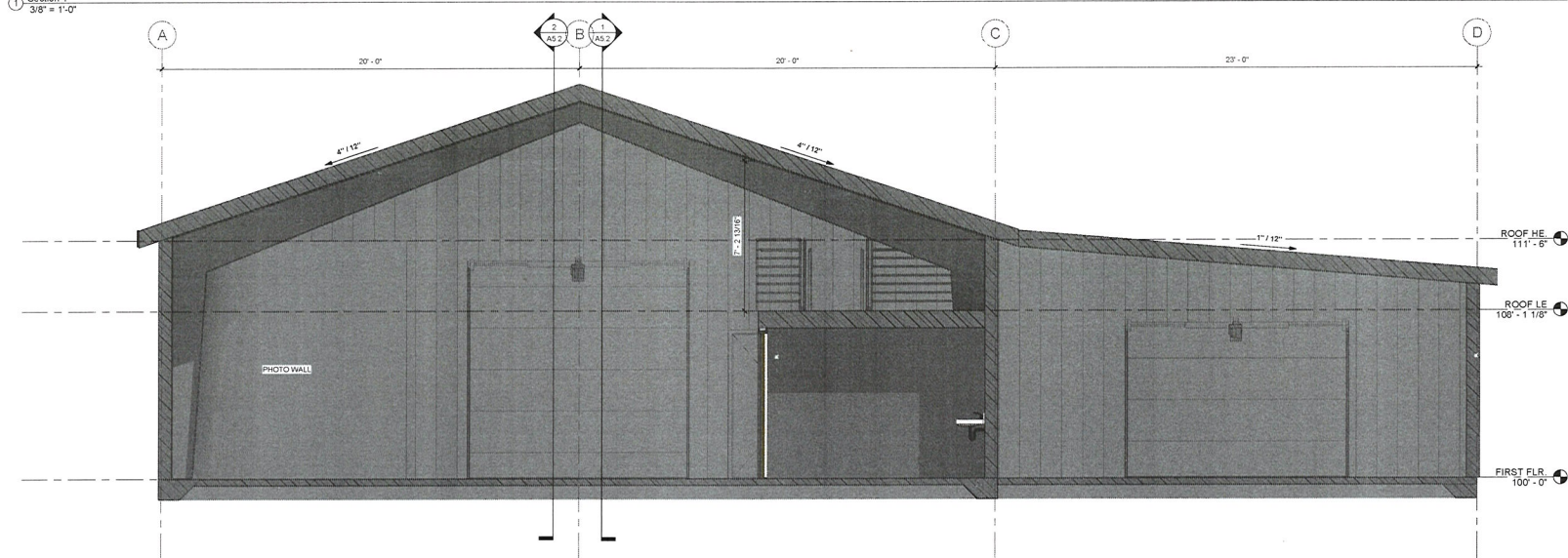
② EAST ELEVATION PROPOSED
3/8" = 1'-0"

PROJECT:	SHEET NAME:	REVISION:	ADDRESS:	PROJECT NO:	RES	SHEET #
BUILDING ALTERATION III WODBOTTOM	EXTERIOR ELEVATIONS	REVISIONS	801 N PAGE ST, STOUGHTON, WI	0221-14	ROUSSEV ENGINEERING SOLUTIONS, LLC 406 Windy Peak Rd - Verona, WI 53593 608-620-3036 (Office) • svt@rousseveengineering.com	A4.3

PLOT DATE: 5/13/21
 PLOT BY: SSR
 PLOT SCALE: 3/8" = 1'-0"
 BID DOCUMENTS



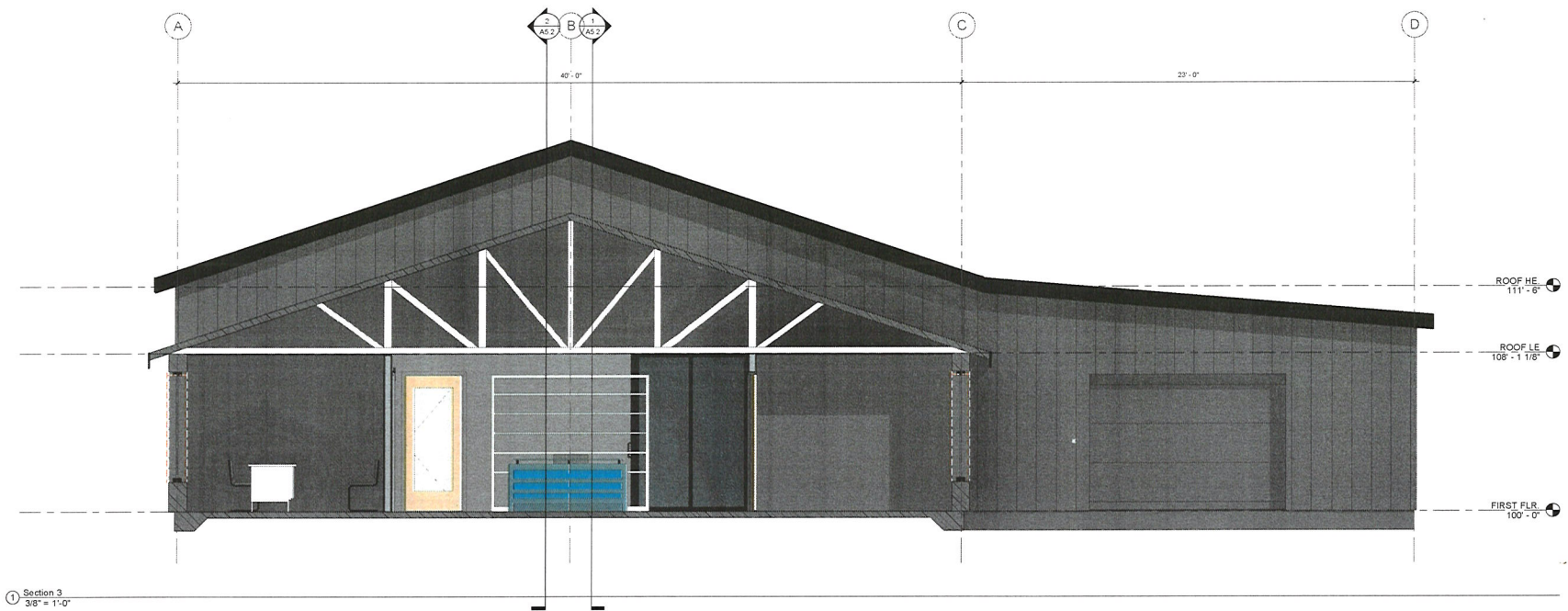
1 Section 1
3/8" = 1'-0"



2 Section 2
3/8" = 1'-0"

PROJECT:	SHEET NAME:	REVISION:	ADDRESS:	PROJECT NO:	RES ROUSSEV ENGINEERING SOLUTIONS, LLC	SHEET #
BUILDING ALTERATION III WODBOTTOM	BUILDING SECTIONS	REVISIONS NO BY DATE	801 N PAGE ST, STOUGHTON, WI	0221-14	406 Windy Peak Rd - Verona, WI 53593 608-620-3036 (Office) - svet@rousseveengineering.com	A5.0
<small> This document contains confidential and proprietary information of Roussev Engineering Solutions, LLC. It is to be used only for the project and for the client's use only. It is not to be distributed, copied, or altered without the written consent of Roussev Engineering Solutions, LLC. BID DOCUMENTS </small>						<small> PLOT DATE: 5/13/21 PLOT BY: SSR PLOT SCALE: 3/8" = 1'-0" </small>

FILE NAME: \\nas2\res\Projects\2021\0221-14 ABC WOD Bottom\A05B010A5.rvt



PROJECT:

BUILDING ALTERATION III
WODBOTTOM

SHEET NAME:

BUILDING SECTION

REVISION:

REVISIONS

NO. BY DATE

ADDRESS:

801 N PAGE ST, STOUGHTON, WI

PROJECT NO:

0221-14

RES ROUSSEAU ENGINEERING
SOLUTIONS, LLC

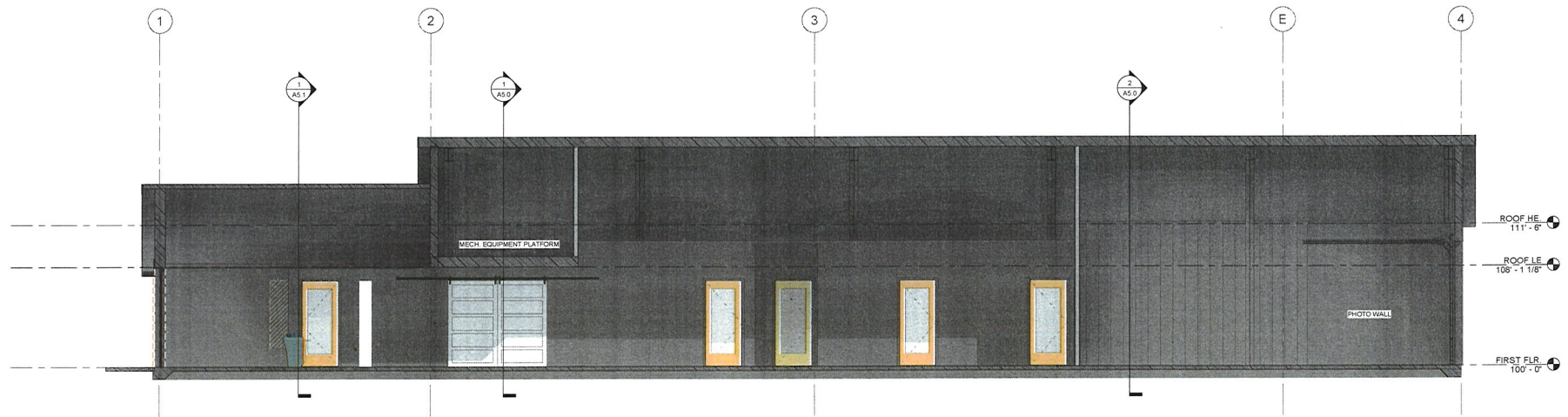
406 Windy Peak Rd - Verona, WI 53593
608-620-3036 (Office) - svet@rousseauengineering.com

This document contains confidential or proprietary information of Rousseau Engineering Solutions, LLC.
It is to be used only for the project and site to which it applies. It is not to be reproduced, stored in a retrieval system, or transmitted in any form or by any means, electronic, mechanical, photocopying, recording, or by any information storage and retrieval system, without the prior written permission of Rousseau Engineering Solutions, LLC.
BID DOCUMENTS

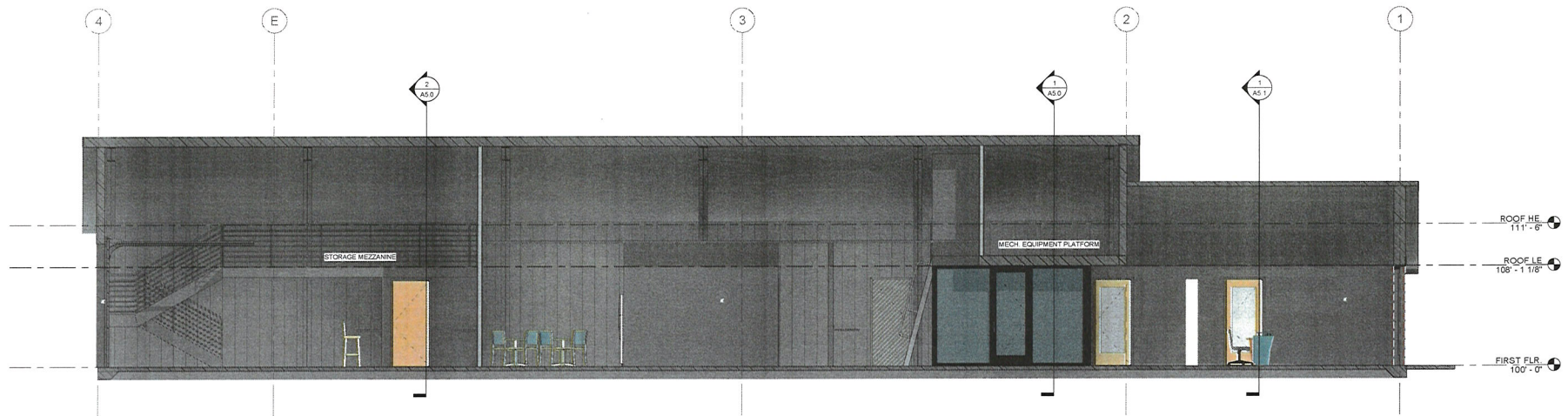
SHEET #

A5.1

PLOT DATE: 5/13/21
PLOT BY: SSR
PLOT SCALE: 3/8" = 1'-0"



② Section 4
1/4" = 1'-0"

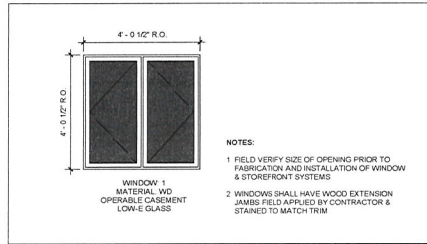


① Section 5
1/4" = 1'-0"

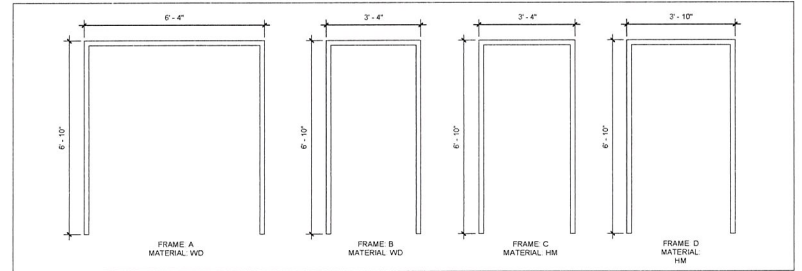
PROJECT:	SHEET NAME:	REVISION:	ADDRESS:	PROJECT NO:	RES	SHEET #
BUILDING ALTERATION III WODBOTTOM	BUILDING SECTION	REVISIONS	801 N PAGE ST, STOUGHTON, WI	0221-14	ROUSSEV ENGINEERING SOLUTIONS, LLC	A5.2
		NO BY DATE			406 Windy Peak Rd - Verona, WI 53593 608-620-3036 (Office) - svet@rousseveengineering.com	PL01 DATE: 5/13/21 PL01 BY: AUB01 PL01 SCALE: 1/4" = 1'-0"

This document contains information that is the property of Roussev Engineering Solutions, LLC. It is to be used only for the project and for the purpose intended. It is not to be reproduced, stored in a retrieval system, or transmitted in any form or by any means, electronic, mechanical, photocopying, recording, or by any information storage and retrieval system, without the prior written permission of Roussev Engineering Solutions, LLC.

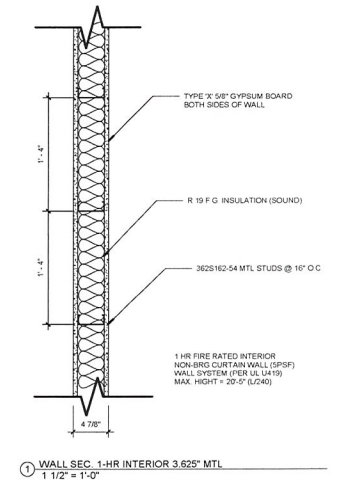
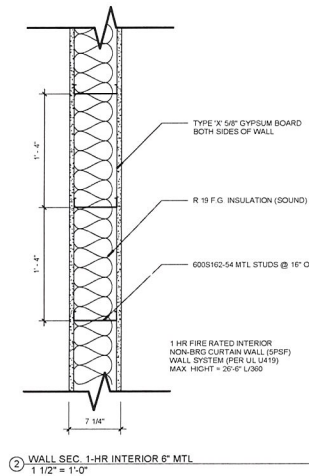
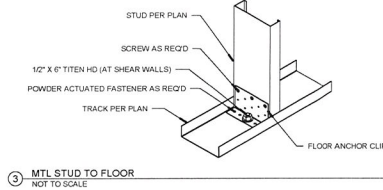
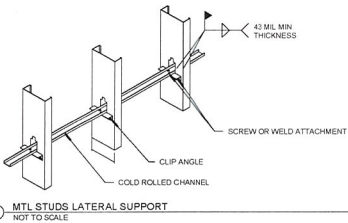
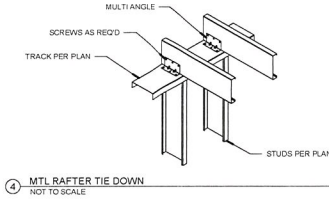
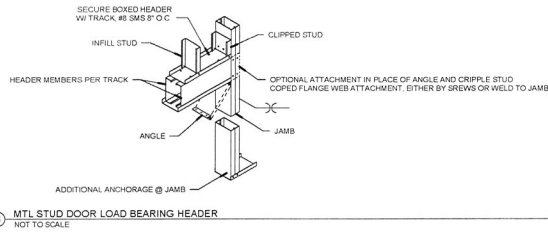
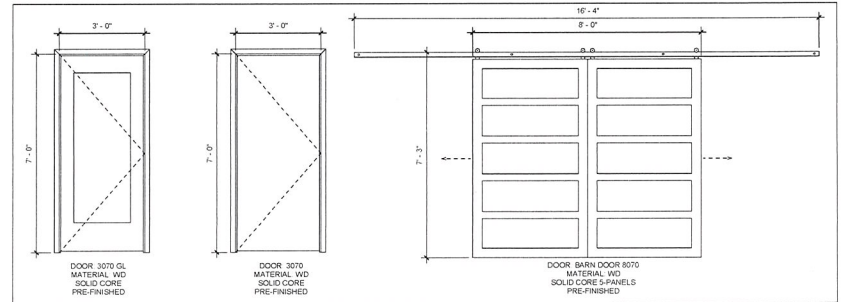
WINDOW ELEVATION



DOOR FRAME ELEVATIONS



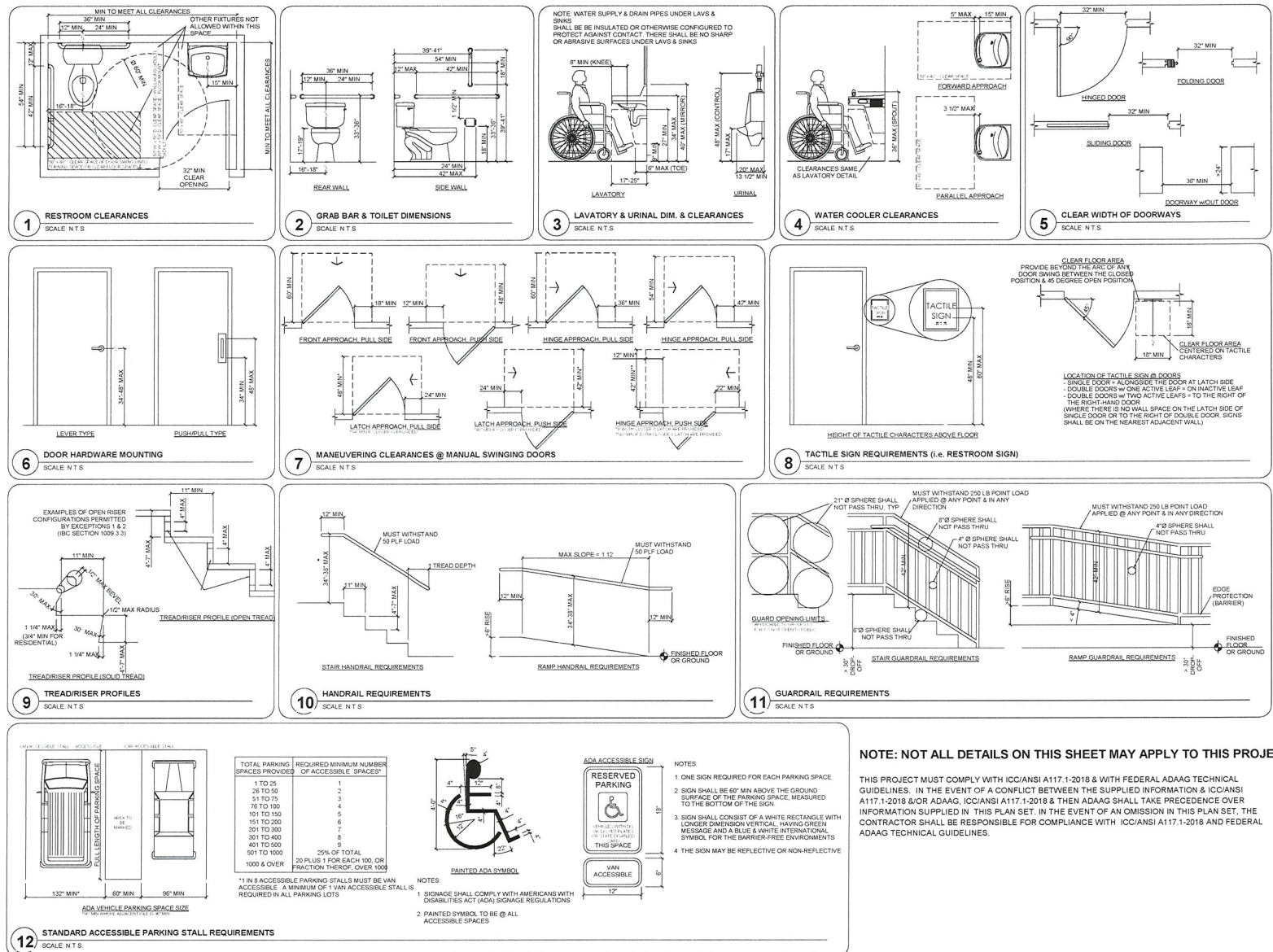
DOOR ELEVATIONS



PROJECT:	SHEET NAME:	REVISION:	ADDRESS:	PROJECT NO:	RES ROUSSEV ENGINEERING SOLUTIONS, LLC	SHEET #
BUILDING ALTERATION III WODBOTTOM	WALL SECTIONS	REVISIONS NO BY DATE	801 N PAGE ST, STOUGHTON, WI	0221-14	406 Windy Peak Rd - Verona, WI 53593 608-620-3036 (Office) - sveit@rousseveengineering.com	A6.0

This document contains confidential or proprietary information of Roussev Engineering Solutions LLC. Neither this document nor the information herein is to be reproduced, distributed, used or disclosed without the express prior consent as specifically authorized by Roussev Engineering Solutions LLC.

PL01 DATE: 5/13/21
PL01 BY: SSR
PL01 SCALE: As indicated



NOTE: NOT ALL DETAILS ON THIS SHEET MAY APPLY TO THIS PROJECT.

THIS PROJECT MUST COMPLY WITH ICC/ANSI A117.1-2018 & WITH FEDERAL ADAAG TECHNICAL GUIDELINES. IN THE EVENT OF A CONFLICT BETWEEN THE SUPPLIED INFORMATION & ICC/ANSI A117.1-2018 & OR ADAAG, ICC/ANSI A117.1-2018 & THEN ADAAG SHALL TAKE PRECEDENCE OVER INFORMATION SUPPLIED IN THIS PLAN SET. IN THE EVENT OF AN OMISSION IN THIS PLAN SET, THE CONTRACTOR SHALL BE RESPONSIBLE FOR COMPLIANCE WITH ICC/ANSI A117.1-2018 AND FEDERAL ADAAG TECHNICAL GUIDELINES.

PROJECT:	SHEET NAME:	REVISION:	ADDRESS:	PROJECT NO:	RES	ROUSSEV ENGINEERING SOLUTIONS, LLC	SHEET #
BUILDING ALTERATION III WODBOTTOM	ADA DETAILS	REVISIONS	801 N PAGE ST, STOUGHTON, WI	0221-14	406 Windy Peak Rd - Verona, WI 53593 608-620-3038 (Office) - svet@rousseveengineering.com		A8.0

FILE NAME: \na\27\ref\Projects\2021\0221-14_A8C_WOD Bottom\A8.0.DWG

5/13/21
SSR
1/2" = 1'-0"